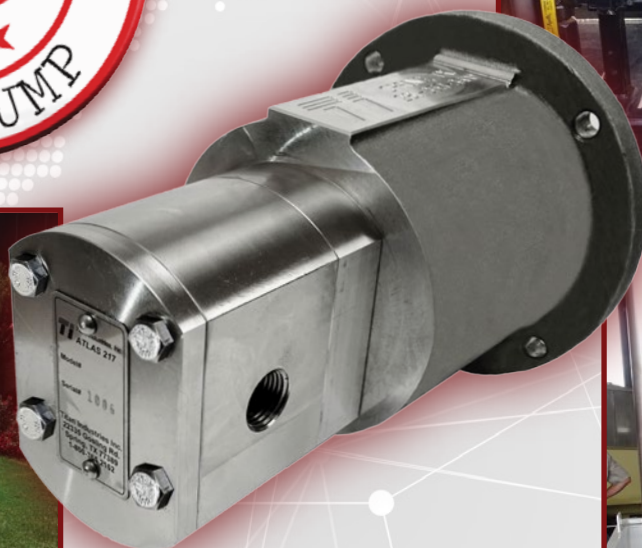
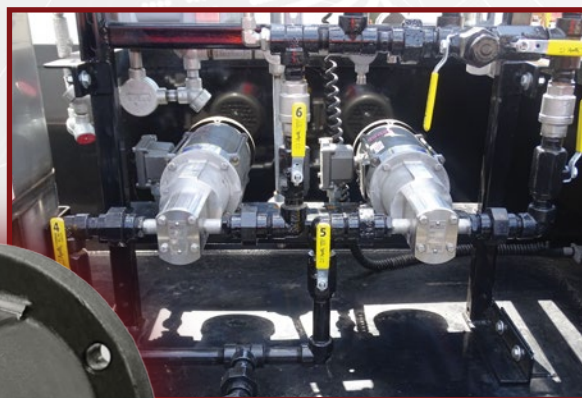


Titan Atlas™ Stainless Steel Pumps



Titan has engineered the most reliable Red Dye pump on the market today.

Our Atlas™ Pump Series was specifically designed with Red Dye in mind. The Atlas™ is constructed of stainless steel components that resists corrosion from Red Dye and other harsh additives. These pumps are built for hassle-free service on all of your aggressive additives.

Available in 2 Gallons Per Minute or 7 Gallons Per Minute, Titan has an Atlas™ for the job. Stop having to constantly replace inferior pumps and contact our Titan Sales Team today!

Atlas™ pumps have become the standard in numerous terminals across the country!

MAKE THE SWITCH!

Titan Atlas™ 217 (2GPM) Pump Performance Data Sheet

Construction:

- **Body:** 316 Stainless Steel
- **Shaft:** Hardened 17-4 PH Stainless Steel
- **Housing:** 316 Stainless Steel
- **Bearings:** Carbon Graphite
- **Gears/Shafts:** 17-PH Stainless Steel (Heat treated to HH1150)
- **O-Rings:** Viton Seals
- **1/2" FNPT**
- **Mag Drive w/neodymium inner and outer magnets rated for 9 ft.lbs of torque**

Drive Requirements:

- **Speed, rated:** 1750 rpm
- **Pump Speed, minimum (rpm):** 1425 rpm
- **Pump Speed, maximum (rpm):** 1800 rpm
- **Motor requires 56c mounting face**

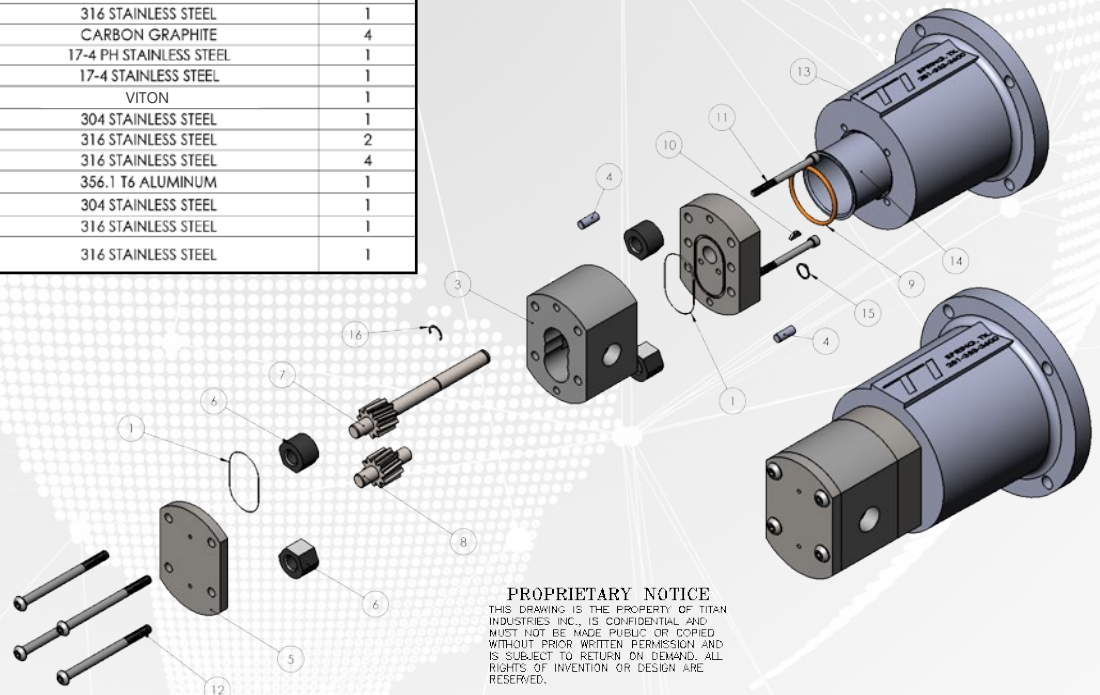
Operational Data:

- **Rated Discharge Pressure:** 0-200 psi
- **Maximum Allowable Unsustained Working Pressure:** 600 psi
- **Flooded Suction required**
- **Mag Drive Decouple Pressure:** 600 psi
- **Nominal Flow:** 2 gpm

Features:

- Heavy duty stainless steel gear pumps for optimum chemical capability
- Back pull-out design for easy maintenance without disturbing piping
- One-piece "D" style bushings eliminate the need for wearplates and provide positive alignment and gear support
- Capable of operating at nominal speeds
- No integral relief valve available, external relief recommended

ITEM NO.	PART NUMBER	DESCRIPTION	QTY.
1	ADAPTER PLATE O-RING	VITON	2
2	ATLAS ADAPTER PLATE	316 STAINLESS STEEL	1
3	ATLAS 2GPM GEAR HOUSING	316 STAINLESS STEEL	1
4	ATLAS PUMP ALIGNMENT PIN	304 STAINLESS STEEL	2
5	ATLAS PUMP CAP	316 STAINLESS STEEL	1
6	ATLAS PUMP BUSHING	CARBON GRAPHITE	4
7	ATLAS 2GPM LONG GEARS	17-4 PH STAINLESS STEEL	1
8	ATLAS 2GPM SHORT GEARS	17-4 PH STAINLESS STEEL	1
9	BARRIER CUP O-RING	VITON	1
10	WOODRUFF KEY	304 STAINLESS STEEL	1
11	2-3/4" SOCKET CAP SCREW	316 STAINLESS STEEL	2
12	4" BUTTON HEAD SCREW	316 STAINLESS STEEL	4
13	PUMP BRACKET	356.1 T6 ALUMINUM	1
14	PUMP BARRIER CUP	304 STAINLESS STEEL	1
15	RETAINING RING	316 STAINLESS STEEL	1
16	LOW CLEARANCE RETAINING RING	316 STAINLESS STEEL	1



PROPRIETARY NOTICE
THIS DRAWING IS THE PROPERTY OF TITAN INDUSTRIES, INC., IS CONFIDENTIAL AND MUST NOT BE MADE PUBLIC OR COPIED WITHOUT PRIOR WRITTEN PERMISSION AND IS SUBJECT TO RETURN ON DEMAND. ALL RIGHTS OF INVENTION OR DESIGN ARE RESERVED.

22335 Gosling Road • Spring, TX

Tel #: 1800-365-2162

www.titan-solutions.com • sales@titan-solutions.com